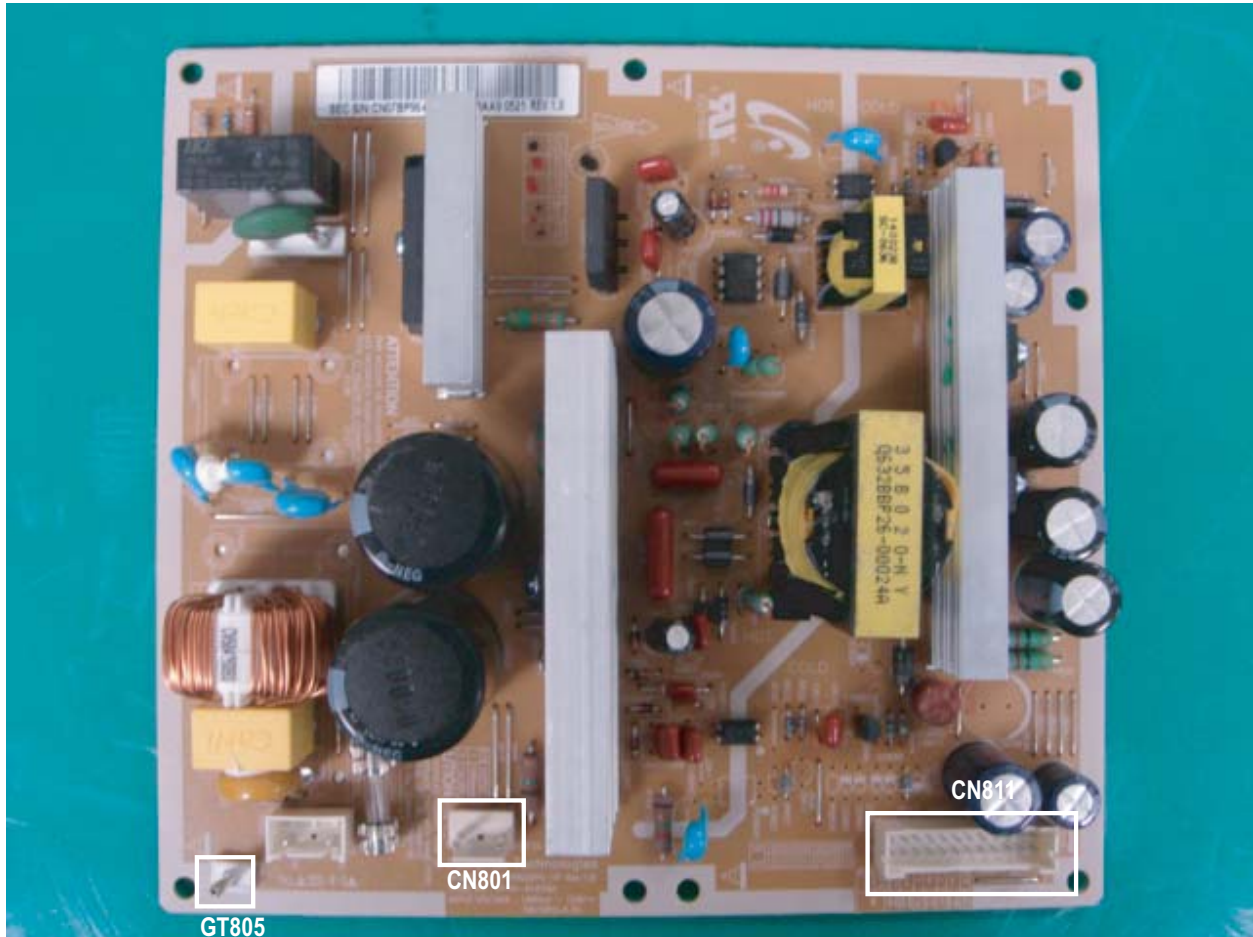


## 9. PCB Diagram

### 9-1 Power Board

#### 9-1-1 Assy Power Board



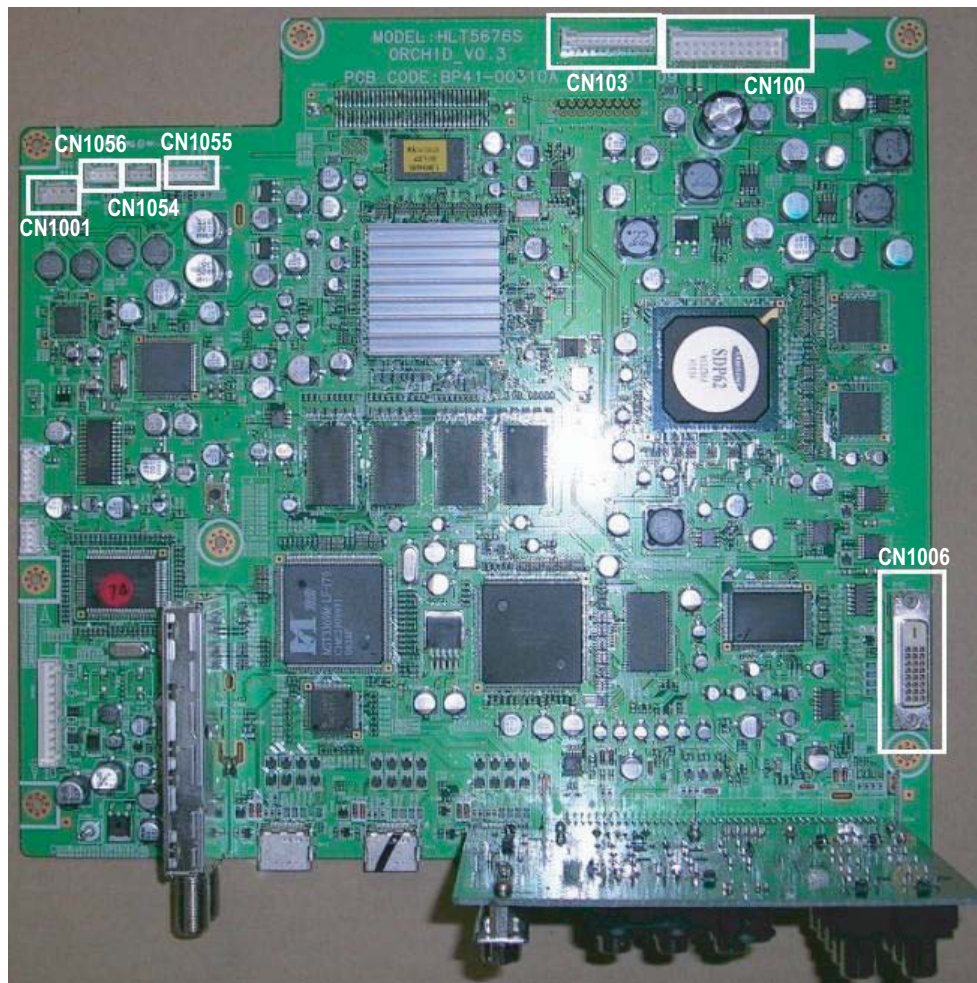
- DC Power Supply  
(Supplies DC power to the main PCB and the sub power board.)

#### 9-1-2 Names & Roles of Key Parts

- \* CNP801 : Supplies power to the sub power board.
- \* CN811 : Supplies power to the main board.
- \* GT805 : Anti-lightning wire connected to the main board. The anti-lightning wire should be installed for safety purposes.

## 9-2 Main Board

### 9-2-1 Assy Main Board



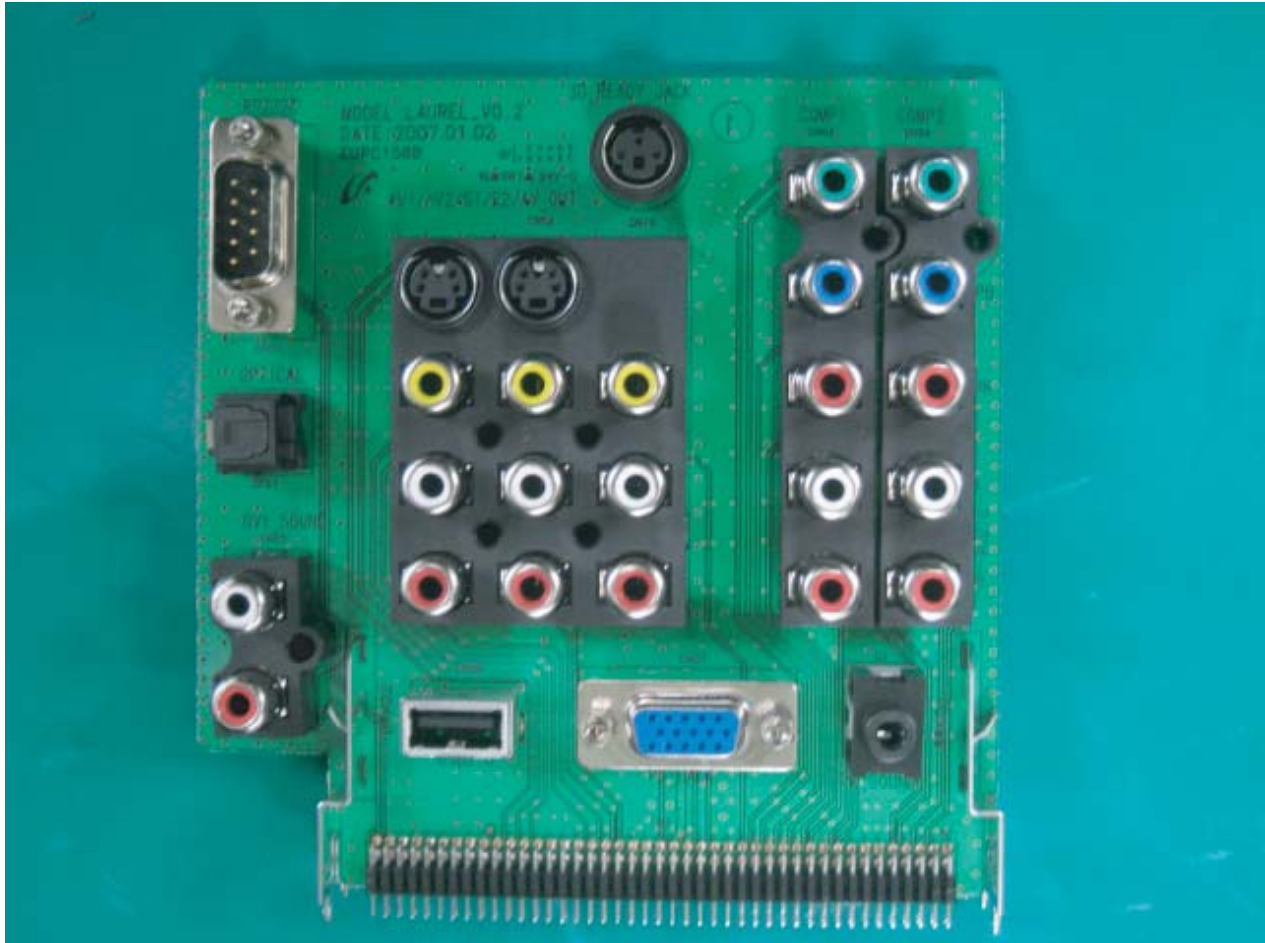
- All Digital Video Processing
- OSD / Menu
- Reset Switch (Reset to the CPU)

### 9-2-2 Names & Roles of Key Parts

- \* CN103 : The power(+5V, +12V) supply to the DMD Board.
- \* CN1006: DMD board control signal and TMDS Signal connection.
- \* CN1001: Speaker cable connection.
- \* CN1056 : Key control signal.
- \* CN1054 : Remote control signal.
- \* CN1055 : Indicator LED signal.
- \* CN100: power supply from SMPS.

## 9-3 Jack Board

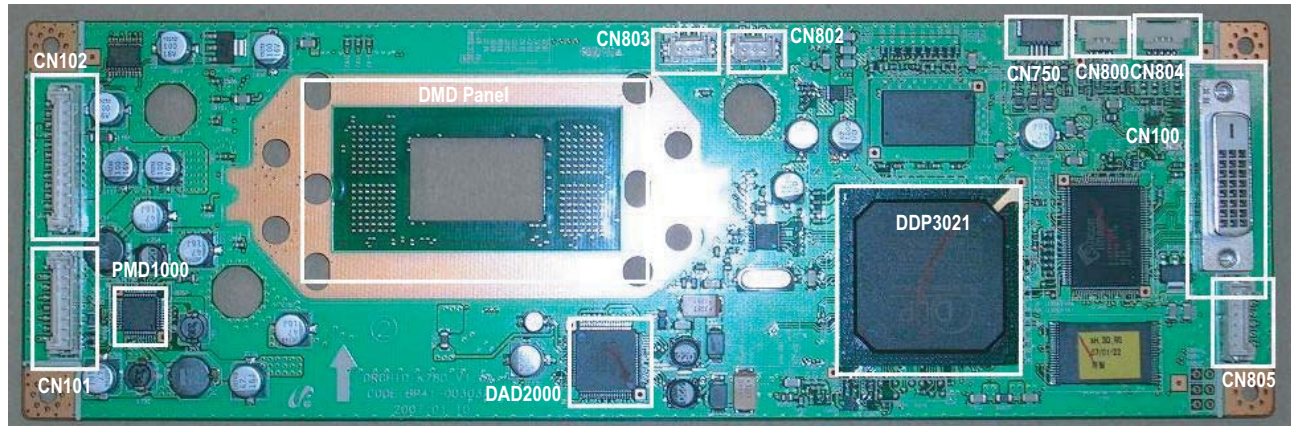
### 9-3-1 Assy Jack Board



- Analog Video Input
- Analog Audio Input
- 3D Ready Jack

## 9-4 DMD Board

### 9-4-1 Assy DMD Board



- Controls the lamp (ON/OFF)
- Drives the color wheel motor
- Drives the panel

### 9-4-2 Names & Roles of Key Parts

- \* CN100 : The DVI cable terminal. This receives the image data from the main board.
- \* CN101 : This sends signals to the Actuator
- \* CN102 : This receives the power from the main board.
- \* CN750 : This sends Color Wheel signal.
- \* CN800 : This receives Color Wheel sensor signal.
- \* CN802 : This sends FAN power. (8V)
- \* CN803 : This sends FAN power. (8V)
- \* CN804 : This sends SCI signal to balast.
- \* CN805 : This receives temp error signal and cover detect signal.
- \* DMD PANEL : This is panel (type x )
- \* DDP3021 : This processes the DMD drive and the signals.
- \* PMD1000 : This supplies the DMD Board power.
- \* DAD2000 : This supplies DMD reset signals.